

# **SIMLI DUALISATION**

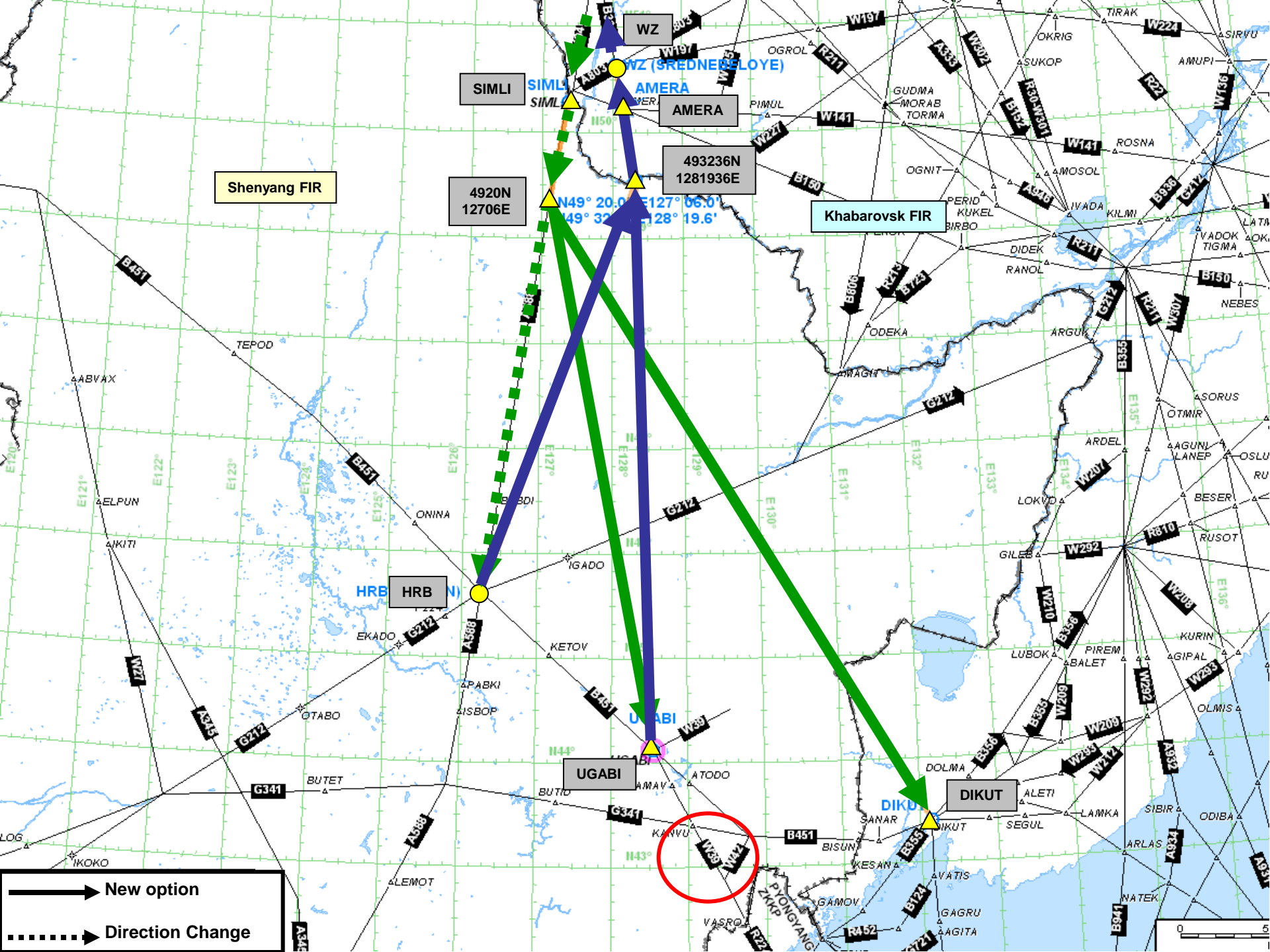
## **Proposals**

**15.035 / FE0017**

**16.005 / FE0031**

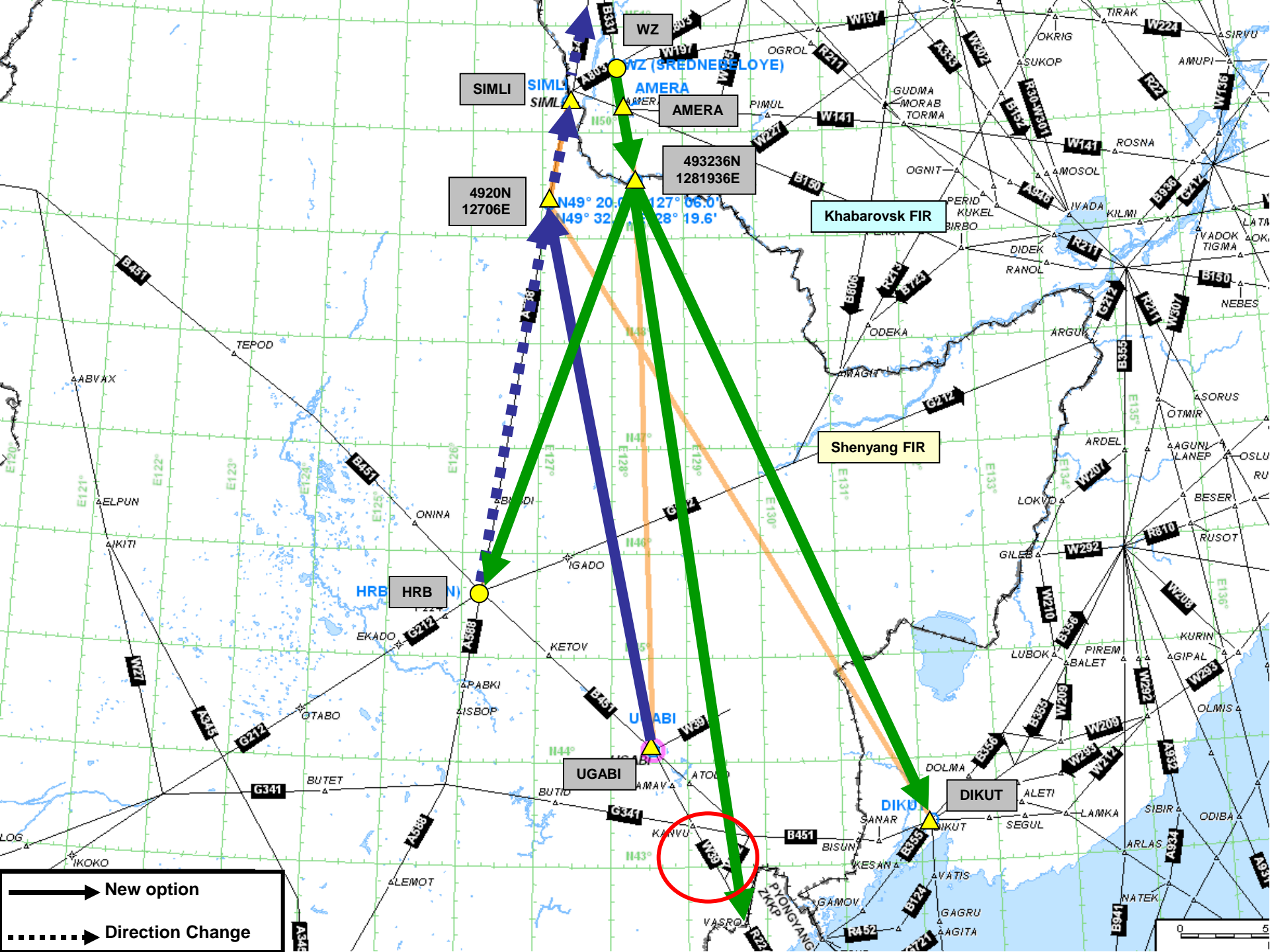
**18.030 / FE0035**

**18.031 / FE0029**



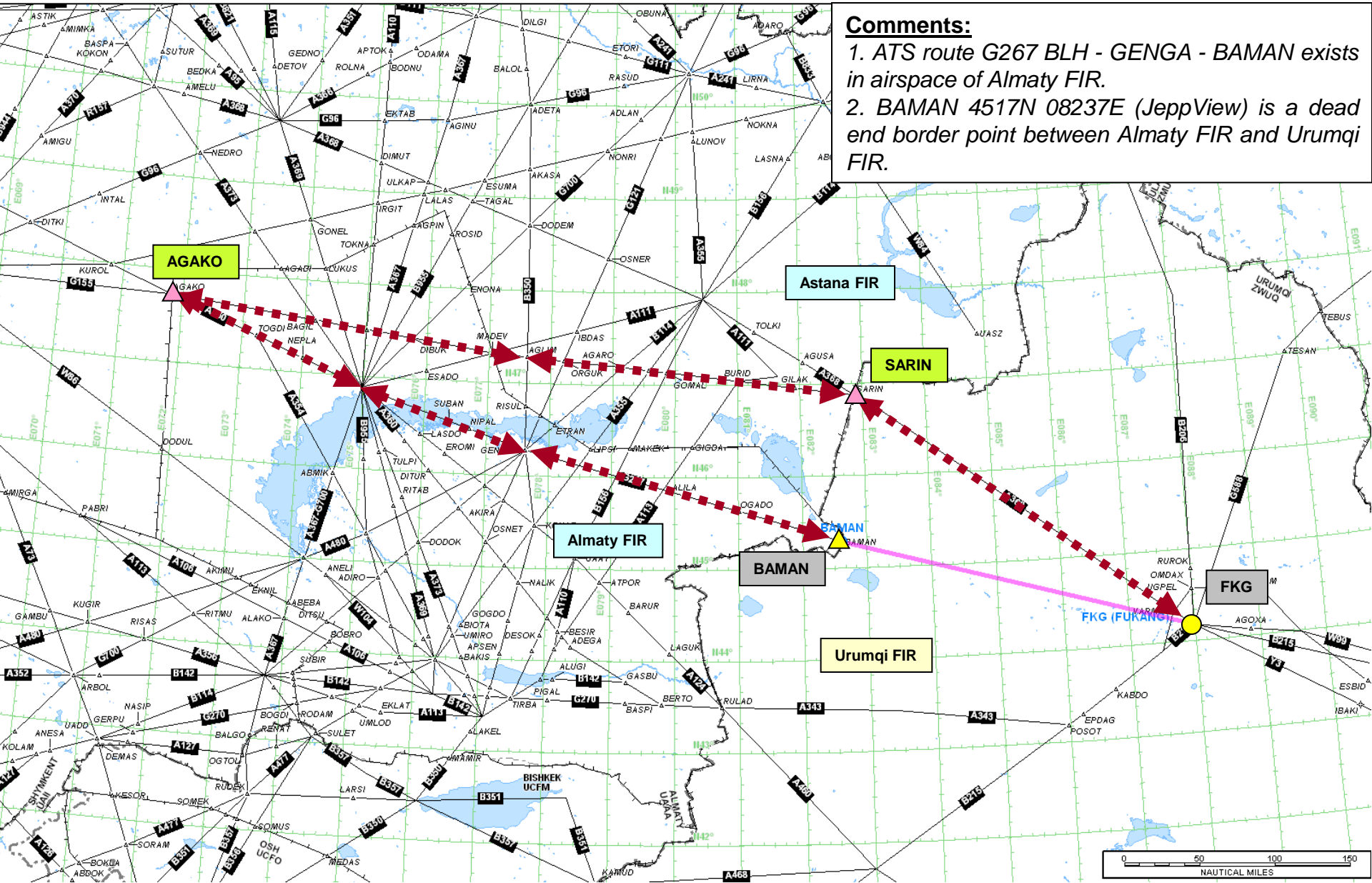
# **SIMLI DUALISATION**

**New Idea**



**BAMAN**

# BAMAN



## Comments:

1. ATS route G267 BLH - GENGA - BAMAN exists in airspace of Almaty FIR.
2. BAMAN 4517N 08237E (JeppView) is a dead end border point between Almaty FIR and Urumqi FIR.